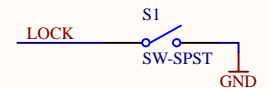
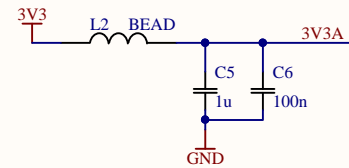
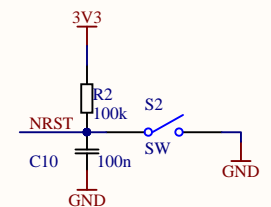


Boot jumper - remove to boot into the DFU bootloader for a firmware update. The jumper is placed in the bottom branch so that it may normally stay attached to the board and doesn't get lost. The cross current is negligible at about 30 uA.

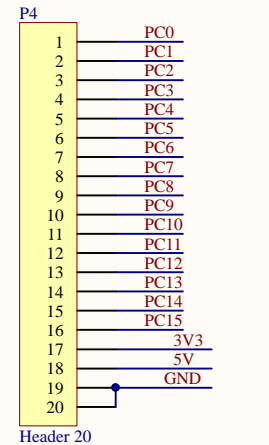
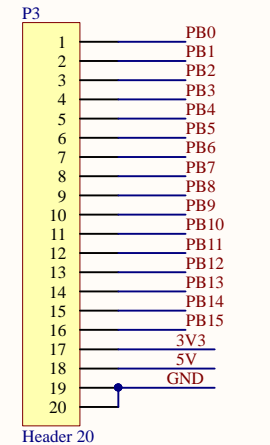
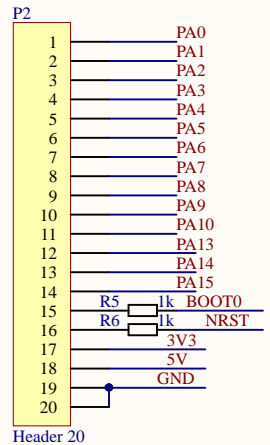
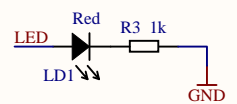


Lock button - push to enable or disable the virtual mass storage USB device with GEX's config files. Observe the indicator LED for a visual feedback.

U3		STM32F072RBT6	
PA0	14	PA0	14
PA1	15	PA1	15
PA2	16	PA2	16
PA3	17	PA3	17
PA4	20	PA4	20
PA5	21	PA5	21
PA6	22	PA6	22
PA7	23	PA7	23
PA8	41	PA8	41
PA9	42	PA9	42
PA10	43	PA10	43
DM	44	PA11/D-	44
DP	45	PA12/D+	45
SWDIO	PA13	PA13/SWDIO	46
SWCLK	PA14	PA14/SWCLK	49
LED	PA15	PA15	50
PB0	26	PB0	26
PB1	27	PB1	27
PB2	28	PB2	28
PB3	55	PB3	55
PB4	56	PB4	56
PB5	57	PB5	57
PB6	58	PB6	58
PB7	59	PB7	59
PB8	61	PB8	61
PB9	62	PB9	62
PB10	29	PB10	29
PB11	30	PB11	30
PB12	33	PB12	33
PB13	34	PB13	34
PB14	35	PB14	35
PB15	36	PB15	36
PC0	8	PC0	8
PC1	9	PC1	9
PC2	10	PC2	10
PC3	11	PC3	11
PC4	24	PC4	24
PC5	25	PC5	25
PC6	37	PC6	37
PC7	38	PC7	38
PC8	39	PC8	39
PC9	40	PC9	40
PC10	51	PC10	51
PC11	52	PC11	52
PC12	53	PC12	53
PC13	2	PC13	2
PC14	3	PC14	3
PC15	4	PC15	4
PD2	54	PD2	54
VBAT	1	VBAT	1
VDD_1	48	VDD_1	48
VDD_2	32	VDD_2	32
VDD_3	19	VDD_3	19
VDD_4	64	VDD_4	64
VDD_A	13	VDD_A	13
VSS_1	47	VSS_1	47
VSS_2	31	VSS_2	31
VSS_3	18	VSS_3	18
VSS_4	63	VSS_4	63
VSS_A	12	VSS_A	12
PF0/OSC_IN	5	OSC_IN	5
PF1/OSC_OUT	6	OSC_OUT	6
NRST	7	NRST	7
BOOT0	60	BOOT0	60



Indicator LED - "start-up chime", periodic flash to indicate correct operation, file upload indication etc. Solid light = fault (will extinguish after a couple seconds due to WD)



Title		
GEX IDC breakout		
Size	Number	Revision
A4		2
Date:	4. 5. 2018	Sheet of
File:	D:\GEX\GEX_IDC\GEX_IDC.SchDoc	Drawn By: Ondřej Hruška